



PUBLIC WORKS BALTIMORE CITY DEPARTMENT OF PUBLIC WORKS BALTIMORE



DEPARTMENT OF PUBLIC WORKS BALTIMORE CITY DEPARTMENT OF PUBLIC



CWEA – The Soft Side of Asset Management Webinar

January 18, 2018

Baltimore Department of Public Works

Water

Serves 1.8 million consumers
3,700 mi/400k accounts
3 reservoirs
3 WTPs / 405 MGD
19 pump stations
24 storage tanks/reservoirs
Wholesale customers

Waste Water

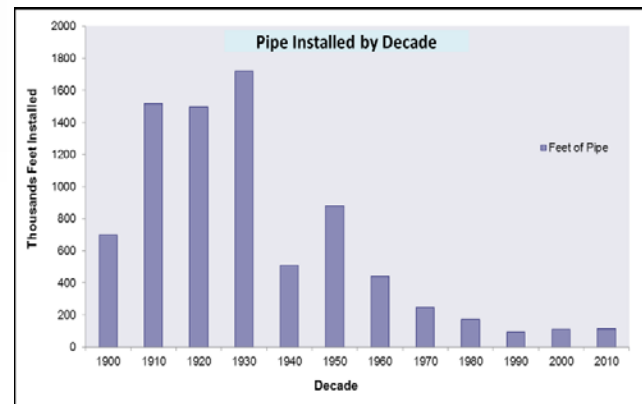
1,400 mi of pipe
270K accounts in the City
9 pump stations
2 WTPs - 250 MGD
Serve Adjacent Counties

Storm Water

Separate system
92 square miles
1,200 miles of pipes
4 pump stations

Solid Waste

Quarantine Rd Landfill
1 transfer station
Trash Collection/Recycling
Street Sweeping
Abandoned Properties
Rat Control
Graffiti
Public ROW cleaning

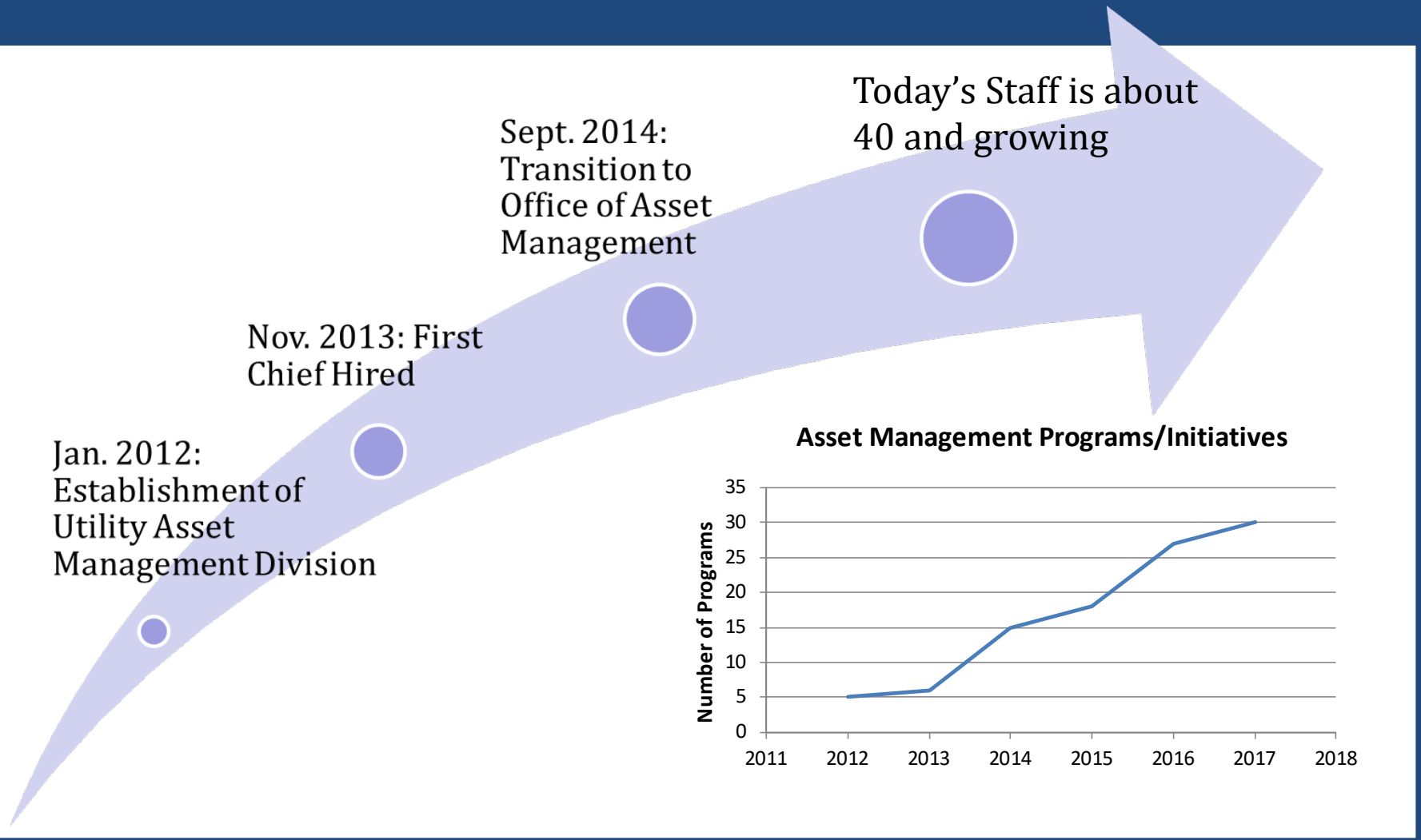


Asset Management Drivers

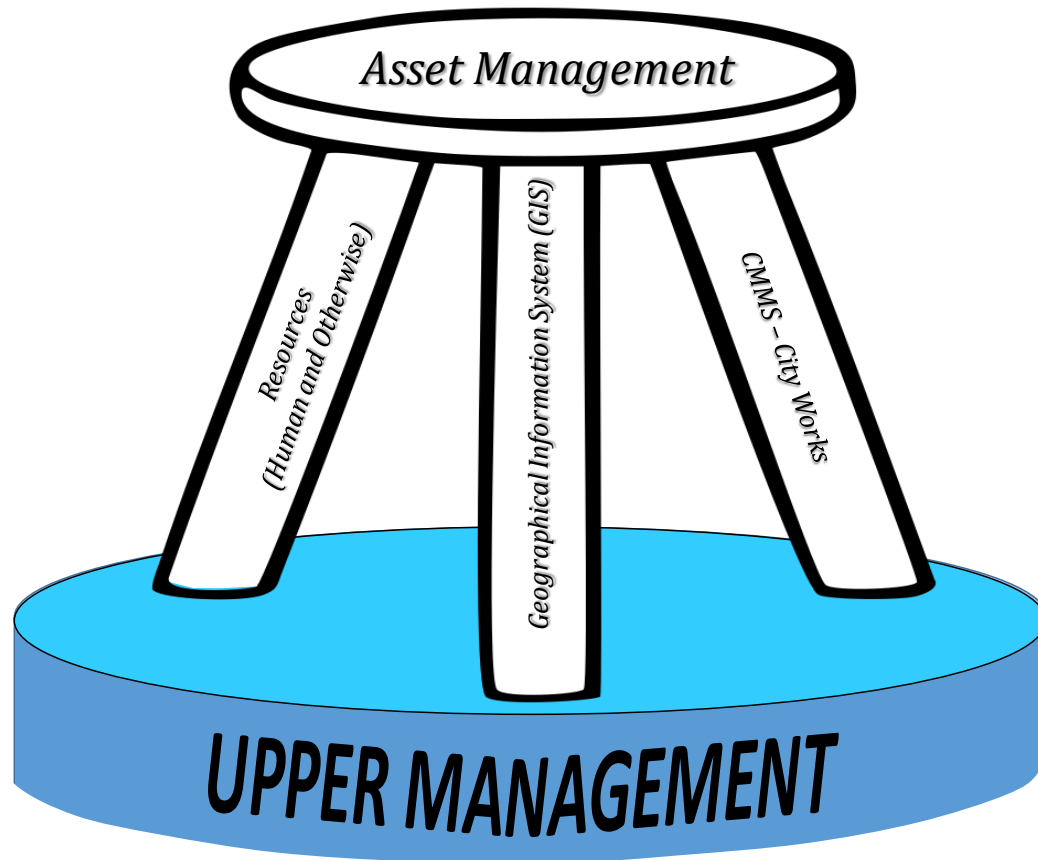
- Managing aging, high-risk infrastructure
- Meeting environmental mandates in a responsible and sustainable manner
- Justify infrastructure investments
- Providing adequate LOS without excessive burden to customers



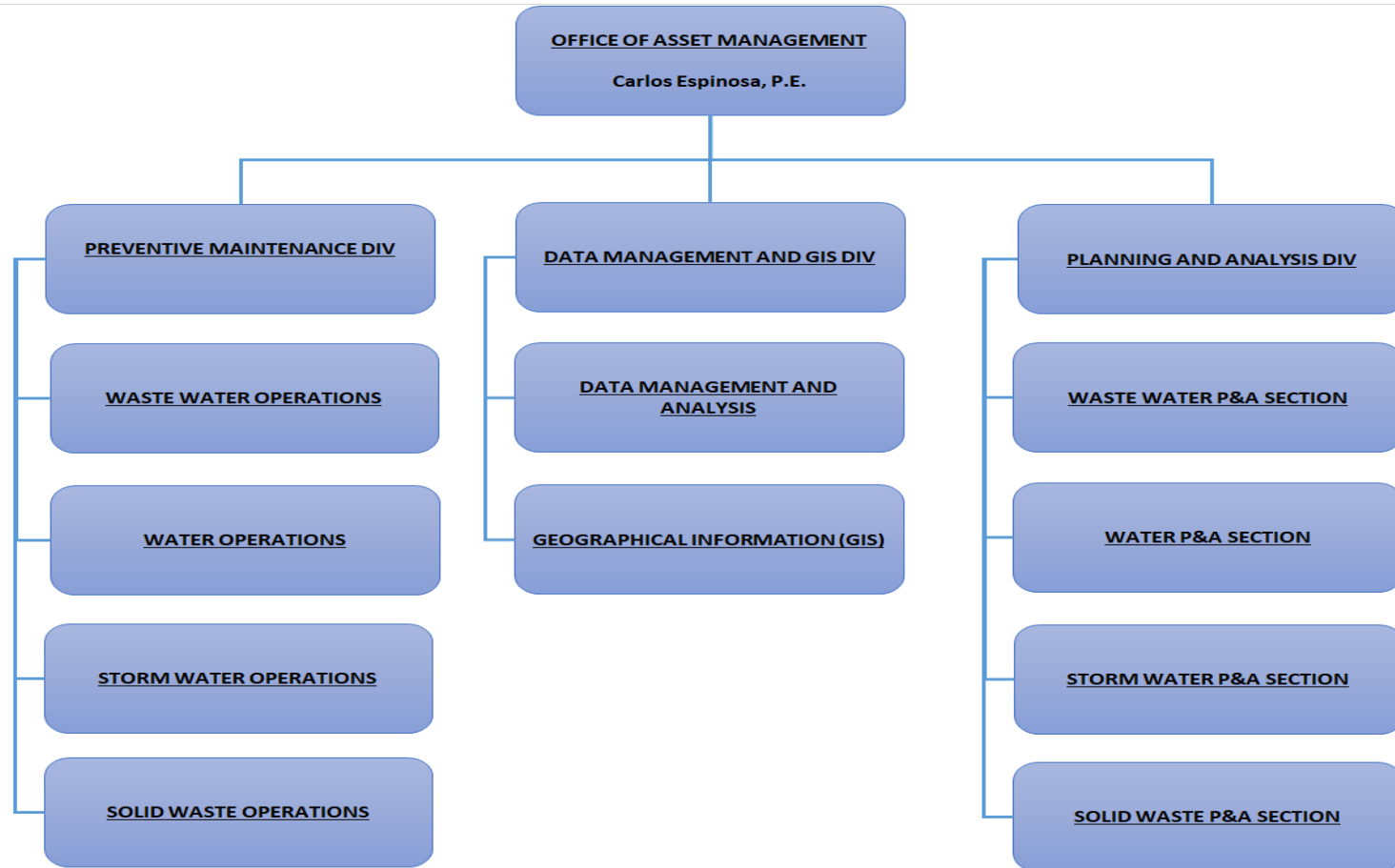
Office of Asset Management History



Asset Management Stool



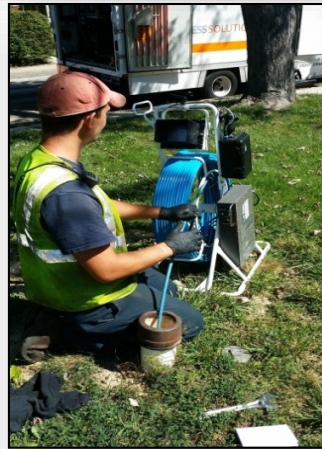
Asset Management Organization



PM Program Planning Document



Asset Management Programs



Water Infrastructure

- Distribution System Renewal
- Strategy for Minimizing Risk of Failure in PCCP
- Large Ferrous Main Assessment
- Unidirectional Flushing (UDF)
- Valve and Hydrant Assessment
- Water System Audit
- Leak Detection
- Water Main Failure Analysis
- Water Meter Maintenance and Testing

Waste Water Infrastructure

- SSO Root Cause Analysis
- FOG Prevention and Abatement
- Root Control
- Lateral Assessment and Renewal
- Collection System Cleaning
- Trunk Main Inspections
- Force Main Assessments
- Collection System Valves

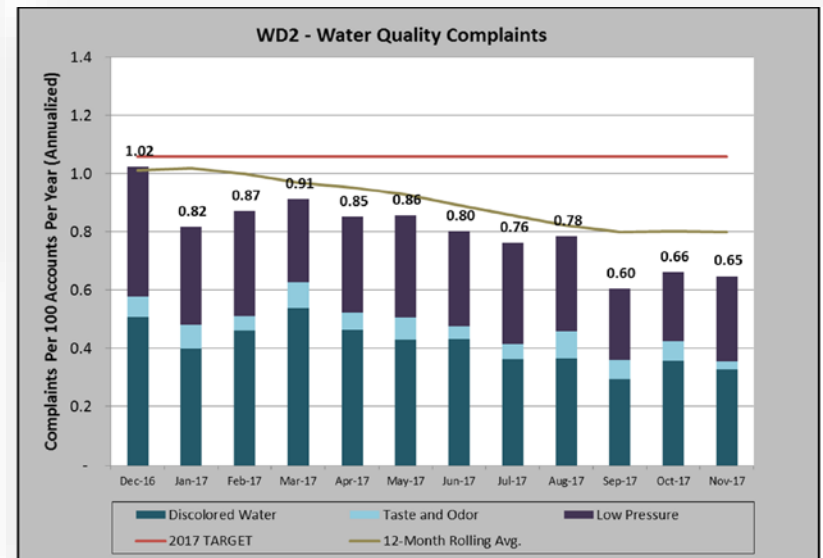
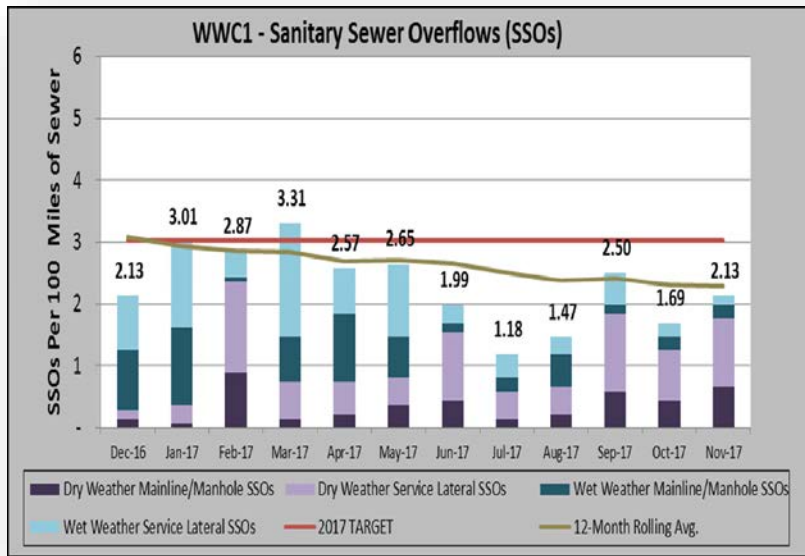
Storm Water Infrastructure

- Inlet Inspections
- Storm Water Facilities (BMPs) O&M

Solid Waste

- Street Sweeping
- Big-Belly Cans
- Abandoned Properties Maintenance

Level of Service (LOS) Indicators



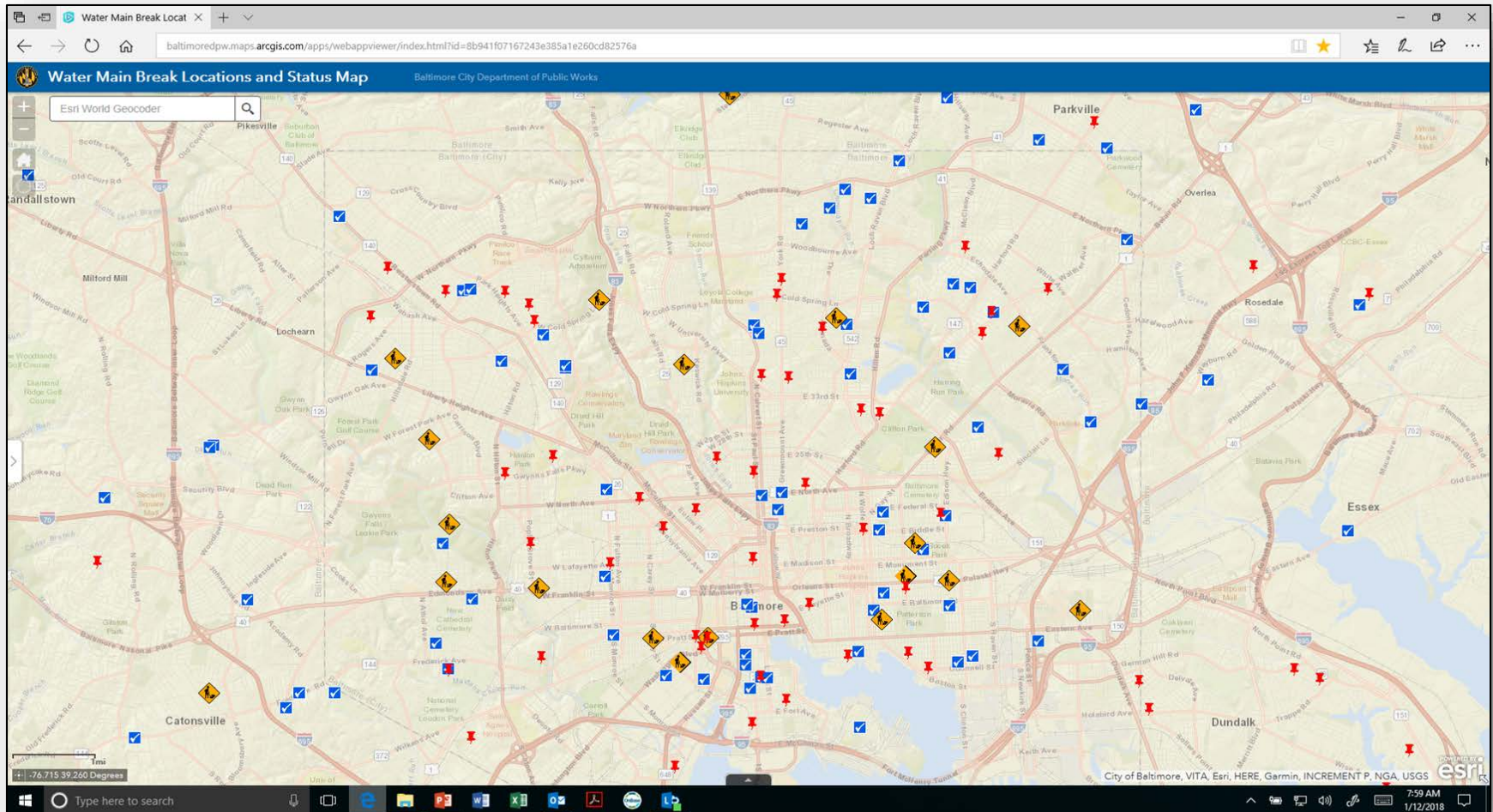
Data Collection

Inspections using field apps.

- Leak Detection
- Valve and Hydrant Assessments
- Sanitary Sewer Overflows
- Storm Water Inlet Inspections
- Fire flow tests
- C-factor tests



Leveraging Information



CWEA Webinar – The Soft Side of Asset Management
January 18, 2018

Questions?

Carlos A. Espinosa, P.E.

Chief, Office of Asset Management

Baltimore City Department of Public Works

200 N. Holliday Street – 11th Floor

Baltimore, Maryland 21202

Office: (410) 396-0009

Carlos.Espinosa@baltimorecity.gov